



Every year, one group
of professionals redefines the
future of international education



Make this the year
you join them



NAFSA

Association of
International Educators

The future of international education has never been more exciting

As the world contracts, possibilities expand.

We live in a world that is changing like never before. Instantaneous Internet communications are creating a truly global neighborhood. Political changes are erasing borders. And long-closed markets are opening their doors.

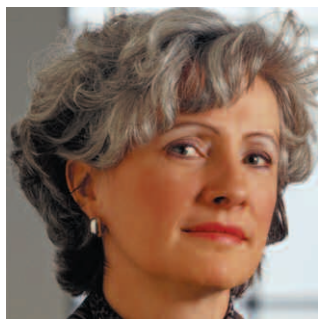
Each day, each new development reveals new possibilities...and unprecedented challenges. In response, college and university administrators and faculty, and business leaders now stress the imperative of developing global skill sets. Skills for the new global workforce will be in ever-greater demand.

You are a leader in international change.

You are one of the many scholars and professionals who help to meet the exploding demand for international expertise. You, and colleagues like you, deliver the services essential to meeting the need:

- ▶▶ On-campus internationalization and leadership
- ▶▶ International/intercultural teaching, training, and research
- ▶▶ Program design, administration, and advising in education abroad
- ▶▶ Recruitment, admissions, and language preparation
- ▶▶ International student and scholar services

**You will
make more
of that future
as a member
of NAFSA**



NAFSA
shares your
vision

NAFSA
knows your
needs

NAFSA
voices your
concerns

You may work in higher education, with associations or foundations, with national or multinational corporations, for government agencies, or in research centers.

Whatever your duties and wherever you perform them, you'll find that membership in NAFSA: Association of International Educators will provide invaluable support of your work to advance international education and exchange, worldwide workforce development, and a truly global perspective. And, joining NAFSA gives you a voice in making a difference.

Not all schools and organizations see the big picture.

As president of a college or university, you are changing the map by internationalizing your campus. Or you may be the sole educator with international expertise and vision on your campus. With NAFSA membership, you will find peer-level support, inspiration, and encouragement.

Join and you will find that, whether you're redesigning curriculum, building faculty support for international education, advocating for greater international awareness on campus, working to maintain compliance with complex regulations, or looking for more ways to support students abroad and at home, the NAFSA community will be there to share knowledge, tools, and expertise.

You belong in this community.

Discover the key benefits of NAFSA membership

NAFSA tools and support make your work more productive.

Need examples of best practice in campus internationalization? Authoritative advice on SEVIS compliance? Helpful feedback from colleagues who've faced the same challenges?

Your NAFSA membership will give you ready access to all that and more. Turn to the online member directory and professional networks for expert input from peers. Read the annual *Internationalizing the Campus* to see how leading institutions are infusing their campuses with internationalization. Subscribe to the new *Adviser's Manual Online* for help with regulatory practice. Consult the *Guide to Study Abroad* to build quality programs.

NAFSA provides the tools and support to help you excel. See page 6 for details.

NAFSA connects you with career-building opportunities.

"Who you know" is important not only when it comes to changing job positions. Being part of a strong network will have you feeling more connected every day.

NAFSA membership puts you in a network of professionals who are eager to reach out with help and advice, to exchange ideas, and to share proven solutions. NAFSA complements those connections with plenty of opportunities for professional development.

See how NAFSA membership will help you build your career on page 8.

...and
become an
accomplished
professional



Joining NAFSA makes you an influential advocate for international education.

You know it can be easy for those in local, state, and national government to overlook the needs of the international education community. Unless we speak out as a group, strategically and consistently, our concerns will not be heard.

As a NAFSA member, you will have many opportunities to make your opinions known...and to drive real and lasting change.

You'll find the facts on page 10.

More than just a professional development association, NAFSA will provide the tools, information, and networks you need to:

- » Participate in public policy and advocacy efforts in support of international education
- » Lead efforts to internationalize your campus
- » Apply intercultural research findings to development of programs and services
- » Comply with challenging new government regulations
- » Safeguard the health and safety of students studying abroad

Ready to join?

See the fold-out application in the back.

Make your office more productive with NAFSA tools and support

Planning to launch bold new initiatives in the future?

Interested in infusing international education across campus? In running a more effective office every day? NAFSA has the tools, news, and information you need to make it all happen.

As a NAFSA member, you enjoy a constant flood of strategies, guidelines, and new approaches to such important tasks as:

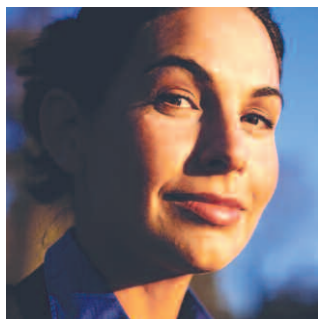
- ▶▶ Leading change
- ▶▶ Applying international/intercultural research to curriculum and service planning
- ▶▶ Helping foreign students feel at home
- ▶▶ Recruiting highly qualified international students
- ▶▶ Marketing your institution and its programs

Bring greater focus to future plans.

NAFSA's periodicals and online resources deliver news and information you can use. Before you can pursue a grant, you have to hear about it. Before you can implement a recruitment strategy, you have to know it's out there. NAFSA membership includes full access to www.nafsa.org, subscriptions to the weekly electronic newsletter **NAFSA.News**, and to the bimonthly **International Educator** magazine.

No other information resources in the field provide expert views of practical tactics and promising possibilities.

...with access to
essential tools,
networks, and
information



...that
help you
maintain
success and
build dreams

» **Put helpful feedback at your fingertips with NAFSA Knowledge Communities, Professional Networks, and Member Interest Groups.** Knowledge Communities create the information and training needed by international educators to build their expertise and promote effective change. Engage in any of the association's online Professional Networks focusing on specialty areas or Member Interest Groups sharing interests close to your heart.

» **Access good advice with NAFSA professional practice library.** Looking for guidance and perspective? Check out the professional practice library at www.nafsa.org. It's an ever-evolving collection of print and online resources — including “how-to” manuals, toolkits, and professional practice guides — all free or affordably priced for members.

» **Master the challenge of immigration rules... and SAVE!** The *NAFSA Adviser's Manual Online* is the field's most trusted source of information on higher education immigration issues. Your NAFSA membership entitles you to the deepest possible discount available for access.

» **Link to your colleagues with the NAFSA Online Membership Directory.** You'll have complete contact information for nearly 10,000 member professionals at associations, schools, government agencies, and service providers in 153 countries with the online *NAFSA Membership Directory*. You'll be able to contact more than 400 educational advisors worldwide who work in U.S. Department of State-sponsored centers that offer guidance to students applying for admission to U.S. schools. You'll never be out of touch.

» **Connect to professional resources with the NAFSA Online Yellow Pages.** The *NAFSA Online Yellow Pages* connects you to hundreds of specialists in 25 categories, from education-abroad programs to credential evaluators, insurance providers and testing services. You'll know where to find the programs, supplies, and services you need.

NAFSA members get what it takes to build strong careers

Have you noticed how opportunity seems to seek out certain types of individuals?

Doors open for those who demonstrate capability, who work hardest to develop their skills, and who stay most up-to-date on the issues that affect their work.

Build a strong career by joining NAFSA. You'll find plenty of options for professional growth, countless events to connect you with the people you need to know, and strong support for your own plans and goals.

NAFSA professional development prepares you for progress.


Programs like the *Executive Leadership Development Program*, *Management Development Program*, *Washington and Conference Symposia* prepare executives – from mid-career managers to chief administrators – to influence and manage change.

The *Academy for International Education* trains representatives from educational institutions that want to establish or expand international education services on their campuses.

The *Foundations of International Education Workshops* and the *Professional Practice Workshops* help get beginning and intermediate professionals off to good starts.

...and stand
out as well-
connected
professionals





» **Annual and Regional Conferences bring networkers together.** Nothing builds your support network like a dynamic event. At the **NAFSA Annual Conference & Expo**, the world's largest gathering of international educators, you'll find others who share your professional interests and challenges. Attend one of the eleven U.S. regional conferences, held every fall, to find support and opportunity for collaboration among colleagues in your region. Your NAFSA membership offers you deep discounts on all NAFSA conferences.

» **Networking also happens right in your region.** As a NAFSA member, you'll not only receive high-level support through the national network, you'll also find people you need to know right in your area. Get involved in NAFSA's regional, state, or local networks, and start being recognized for your leadership close to home.

» **Volunteering can lead to surprising new opportunities.** People who give of themselves, contribute freely, and solve problems are often surprised to find how they quickly become visible and valued. Many NAFSA members find that attending meetings regularly, volunteering at events, and enthusiastic networking leads to leadership possibilities in the association — and builds their reputation and skills in their home institution.

» **The NAFSA Career Center's Job Registry puts opportunity at your fingertips.** The **NAFSA Job Registry** helps employers to find the best talent...and helps professionals to find the best jobs. You'll find listings in all NAFSA's job categories, including Education Abroad, International Student & Scholar Services, Recruitment, Admissions & Preparation, International Education Leadership, and more.

» **The bottom line: NAFSA members stand out!** NAFSA membership instantly marks you as a top professional, committed to excellence. Administrators, educators, and potential employers all recognize the NAFSA name and respect the association's long tradition of excellence.

NAFSA advocacy and outreach make a difference. Members make them possible.

With the support of scholars and professionals like you, NAFSA promotes international education at every level and at every opportunity.

At the personal level, NAFSA provides training and tools to help individuals become well-informed advocates. At the grassroots level, NAFSA's Advocacy Centered Team (ACT) keeps members informed about the latest legislation impacting educational exchange.

At the national level, NAFSA has been the force behind:

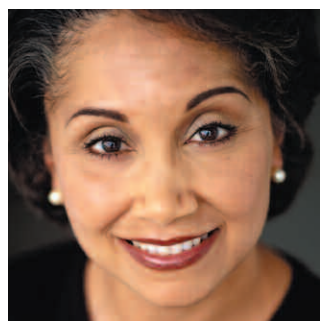
- ▶▶ Promotion of national and state policies on international education
- ▶▶ Working to establish the Simon Study Abroad Program
- ▶▶ International Education Week
- ▶▶ **NAFSA Advocacy Day**, an event that brings members right into the halls of Congress
- ▶▶ Increased awareness of international education issues at the Department of Homeland Security and the Department of State
- ▶▶ Building the premier network of grassroots activists for international education

NAFSA is also working with:

Government agencies on important issues such as visa processing, SEVIS, and immigration regulations affecting students and scholars.

From the streets of America's hometowns to the steps of the U.S. Capitol, NAFSA represents the interests of every professional in international education – with the support of concerned, committed, and aware individuals like you.

Take your place in an influential community



NAFSA Affinity Affiliate Programs

Imagine the deals you can get if you have the concentrated buying power of the NAFSA community behind you.

As a member, you, your staff, and students will be able to receive free travel benefits, seminar discounts, ultra-affordable cell-phone packages, and many other exclusive savings packages. Add it up, and your membership will quickly pay for itself.

Join NAFSA now. Your rewards are waiting.

Only NAFSA membership guarantees you:

- ▶▶ The preeminent tools, training, and information in the field to help you manage, plan, and motivate like never before
- ▶▶ An unparalleled network of support and opportunity with peers who are passionate about your goals
- ▶▶ A respected voice in the future of international education – policymakers hear what NAFSA has to say
- ▶▶ NAFSA member leaders and staff who work hard to help you succeed

Add your voice to the thousands who will define the future of international education in the year ahead.

Fill out the application form, mail with a check in your own envelope, or fill in credit card information and fax it back, or sign up online at www.nafsa.org/membership3. Questions? Call 1.202.737.3699 or e-mail inbox@nafsa.org.

Invest in membership. Sign up today!

Influence the future. Apply for NAFSA membership today.

MEMBERSHIP TERM ENDS JUNE 30, 2008

**Fill out the application or sign up online at www.nafsa.org/membership3.
Questions? Call 1.202.737.3699 or e-mail inbox@nafsa.org.**

Please type or clearly print your information below.

NAME _____

TITLE/OFFICE _____

INSTITUTION/AGENCY/ORGANIZATION _____

MAILING ADDRESS _____

MAILING ADDRESS _____

CITY _____ STATE/PROVINCE _____

ZIP/POSTAL CODE _____ COUNTRY _____

TELEPHONE _____ FAX _____

E-MAIL _____

NAFSA invites the membership of individuals who do not practice discrimination on the basis of race, religion, political persuasion, national origin, immigration status, ethnicity, disability, gender, age, marital status, sexual identity, or sexual orientation. Application for membership signifies acceptance of NAFSA's Code of Ethics. The Code of Ethics may be viewed at www.nafsa.org/ethics.

Global Partnership Program: Corporations, businesses, and academic organizations may join NAFSA through the Global Partnership Program. Call 1.202.737.3699, ext 241 or visit www.nafsa.org/gpp.

NAFSA makes its mailing list available to commercial organizations and professional associations whose products and services may be of interest to NAFSA members. Please check below if you do not wish to receive any of these or other mailings.

Please don't send (check all that apply):

- Commercial mailings Commercial e-mail promotions
 NAFSA.news (NAFSA's weekly e-newsletter)

CONTINUE FORM ON SIDE 2 ►►

[1] Membership category:

(Please check ONE)

- REGULAR.....\$335
Employed by:
 - Academic Institution
 - International Education Organization
 - Other: _____
- ASSOCIATE*.....\$112
 - Community Volunteer
 - Full-Time Student
 - Retired
 - U.S. Dept. of State-Sponsored Rep. [of overseas educational advising center]

**Verification of status required. Student ID, letter from previous employer or community group/organization must accompany application.*

[2] Overall responsibilities:

(Check ONE that best describes your responsibilities)

- My work supports individuals and/or groups both coming to the U.S. and going abroad from the U.S.
- My work supports individuals and/or groups only coming to the U.S.
- My work supports U.S. individuals and/or groups only going abroad.
- My work supports U.S. individuals and/or groups moving between countries other than the U.S.
- Other: _____

[3] Scope of responsibility:

(Check ONE that best describes your scope of responsibility)

- I lead the entire organization or institution.
- I am Provost, Chief Academic Officer, or Chief Operations Officer.
- I lead two or more departments or divisions.
- I lead one department or division.
- I work as a professional within a department or a division.
- I provide support to professional(s), department(s) or division(s).
- Other: _____

[4] Main areas of responsibility:

(Check ALL that apply)

- Administering/developing exchange agreements
- Admissions/recruitment/credentials evaluation/placement
- Chief international education leadership
- English language training and administration
- Government relations
- Immigration/regulatory practice
- Institutional leadership and advancement
- Intercultural teaching
- Internationalizing the curriculum
- Programs or services development and administration
- Programs or services marketing
- Research and scholarship
- Scholar advising/programming
- Student advising/programming
- Other: _____

Dues Payment:

Dues are billed annually in July. Please return application with the appropriate payment. Purchase orders are not accepted.

Membership Dues	\$ _____
Airmail Fee: \$60*.....	\$ _____
Processing Fee	\$ <u>20.00</u>
TOTAL	\$ _____

*Charged to members based outside the U.S., Mexico, or Canada without APO/AFO address

Method of Payment:

- Check enclosed payable to NAFSA. Check # _____ [Checks must be in U.S. dollars drawn on a U.S. bank]
- MasterCard Visa American Express

CARD ACCOUNT # _____

EXPIRATION DATE _____

CARDHOLDER _____

SIGNATURE _____

MB0407

Fax completed form with credit card payment to: 1.202.737.3657

**Or mail to: NAFSA Membership Dept.
PO Box 79159
Baltimore, MD 21279-0159 USA**



Association of
International Educators

1307 New York Avenue NW
Eighth Floor
Washington, DC 20005
www.nafsa.org

A blue-tinted background image showing a woman in profile, speaking and gesturing with her hands. The image is semi-transparent and serves as a backdrop for the text.

Join NAFSA now
and take control of
your future
in international education