

American Society of Landscape Architects
a commitment to professional growth and learning



ASLA




this is your day to

reach new horizons

in the business, art and practice of landscape architecture





Each day you imagine

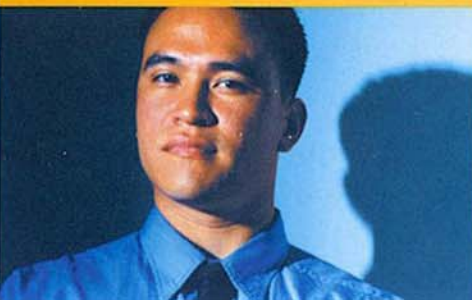
new places and richer communities

**Today, come to a community of people like you
And share the richness of belonging**

Belonging. It means so much these days.

It means getting to know a group of special people. And being recognized for the strengths you bring to the group.

It means being able to turn to people who share your interests. People who will offer you support when you need it. People you can come to like and admire.





That community exists for you in ASLA

There's something very special about the more than 13,500 people in the American Society of Landscape Architects.

They are committed to advancing the field to which you have committed your career.

Like you, they share a calling to build communities that improve people's lives. Like you, they seek to overcome complex challenges in order to bring people to a special place.

Like you, they see settings that celebrate life, there on a far horizon, and they work to bring them into our day-to-day lives.

This community extends around the world.

There are members of the American Society of Landscape Architects in all 50 states. Every U.S. territory. And 42 countries.

Yet through ASLA they have the tools to stay close. Involved. And invigorated.

So they share, and grow, together.

Hear what excites our members about ASLA.

Within this booklet, several members share thoughts on the most rewarding aspects of membership in ASLA. But to start, consider the one member comment that ASLA hears over and over, from many voices, year after year:

"I have met fascinating, helpful, friendly people in the field of landscape architecture that I would not have met if I hadn't been a member of ASLA. And they have been there for me whenever I've needed them."

Isn't that a great thing to be able to say?

*"I have been able to work
with great people — people
I never would have known
if I hadn't joined ASLA."*



— Scott Emmelkamp, ASLA

Peckham, Guyton, Albers & Viets

St. Louis, MO